



Test Report



Report No.: PTC25032012701C-EN01

Issue Date: Apr. 09, 2025

Page1 of 10

Applicant: HANGZHOU YINFU TECHNOLOGY CO.,LTD

Address: Room 1006, Building 7, Xingyun Kunpeng Center, No. 112, Jinjiadu Road, Liangzhu Street, Yuhang District, Hangzhou City, Zhejiang , China

The following merchandise was (were) submitted and identified by client as:

Sample Name: Network cameras

Test Sample Model: IPC-EF1410C-S2-A

Other Sample Model: Please refer to next page

Manufacturer: HANGZHOU YINFU TECHNOLOGY CO.,LTD

Address: Room 1006, Building 7, Xingyun Kunpeng Center, No. 112, Jinjiadu Road, Liangzhu Street, Yuhang District, Hangzhou City, Zhejiang , China

Sample Received Date: Mar. 25, 2025

Completed Date: Apr. 01, 2025

Test Requested: As specified by client, with reference to RoHS Directive 2011/65/EU and its subsequent amendments regulation EU No.2015/863.(Lead (Pb), Cadmium(Cd), Mercury(Hg), Hexavalent Chromium(Cr^{6+}), PBBs and PBDEs, Phthalates (DBP, BBP,DEHP,DIBP))

Conclusion(s): According to the test results of below test parameters, the tested materials of submitted samples complied with the requirements for RoHS Directive 2011/65/EU and its subsequent amendments regulation EU No.2015/863.

Test Result(s) and Test Method(s):Please refer to next page(s).

Prepared by: Anne

Checked by:Crystal

Approved by: Miya



This report is issued according to the general clauses in www.ptc-testing.com by PTC. Responsibility, guarantee and law restriction are defined in the general service clauses. The report is only responsible for the submitted sample(s) except as otherwise noted. The report could not be copied without permission of the company.

Precise Testing & Certification (Guangdong) Co., Ltd. (PTC)

Building 1, No. 6, Tongxin Road, Dongcheng Street, Dongguan, Guangdong, China

Tel: 86-769-38808222

Fax: 86-769-38826111

[http:// www.ptc-testing.com](http://www.ptc-testing.com)



Test Report

Report No.: PTC25032012701C-EN01

Issue Date: Apr. 09, 2025

Page2 of 10

Other Sample Model:

IPC-BF12XXX-XXX-XXX, IPC-BF12XXX-XXX-XXX-L, IPC-BF12XXX-XXX-XXX-PV, IPC-B23XXX-XXX-XXX, IPC-BF13XXX-XXX-XXX-L, IPC-BF13XXX-XXX-XXX-PV, IPC-BF14XXX-XXX-XXX, IPC-BF14XXX-XXX-XXX-L, IPC-BF14XXX-XXX-XXX-PV, IPC-BF15XXX-XXX-XXX, IPC-BF15XXX-XXX-XXX-L, IPC-BF15XXX-XXX-XXX-PV, IPC-BF16XXX-XXX-XXX, IPC-BF16XXX-XXX-XXX-L, IPC-BF16XXX-XXX-XXX-PV, IPC-BF18XXX-XXX-XXX, IPC-BF18XXX-XXX-XXX-L, IPC-BF18XXX-XXX-XXX-PV, IPC-DF14XXX-XXX-XXX, IPC-DF14XXX-XXX-XXX-L, IPC-DF14XXX-XXX-XXX-PV, IPC-DF15XXX-XXX-XXX, IPC-DF15XXX-XXX-XXX-L, IPC-DF15XXX-XXX-XXX-PV, IPC-DF16XXX-XXX-XXX, IPC-DF16XXX-XXX-XXX-L, IPC-DF16XXX-XXX-XXX-PV, IPC-DF18XXX-XXX-XXX, IPC-DF18XXX-XXX-XXX-L, IPC-DF18XXX-XXX-XXX-PV, IPC-EF14XXX-XXX-XXX, IPC-EF14XXX-XXX-XXX-L, IPC-EF14XXX-XXX-XXX-PV, IPC-EF15XXX-XXX-XXX, IPC-EF15XXX-XXX-XXX-L, IPC-EF15XXX-XXX-XXX-PV, IPC-EF16XXX-XXX-XXX, IPC-EF16XXX-XXX-XXX-L, IPC-EF16XXX-XXX-XXX-PV, IPC-EF18XXX-XXX-XXX, IPC-EF18XXX-XXX-XXX-L, IPC-EF18XXX-XXX-XXX-PV, IPC-BF12XXX-XXX-XXX-L-B, IPC-BF12XXX-XXX-XXX-PV-B, IPC-BF13XXX-XXX-XXX-L-B, IPC-BF13XXX-XXX-XXX-PV-B, IPC-BF14XXX-XXX-XXX-L-B, IPC-BF14XXX-XXX-XXX-PV-B, IPC-BF15XXX-XXX-XXX-L-B, IPC-BF15XXX-XXX-XXX-PV-B, IPC-BF16XXX-XXX-XXX-L-B, IPC-BF16XXX-XXX-XXX-PV-B, IPC-BF18XXX-XXX-XXX-L-B, IPC-BF18XXX-XXX-XXX-PV-B, IPC-DF14XXX-XXX-XXX-L-B, IPC-DF14XXX-XXX-XXX-PV-B, IPC-DF15XXX-XXX-XXX-L-B, IPC-DF15XXX-XXX-XXX-PV-B, IPC-DF16XXX-XXX-XXX-L-B, IPC-DF16XXX-XXX-XXX-PV-B, IPC-DF18XXX-XXX-XXX-L-B, IPC-DF18XXX-XXX-XXX-PV-B, IPC-EF14XXX-XXX-XXX-L-B, IPC-EF14XXX-XXX-XXX-PV-B, IPC-EF15XXX-XXX-XXX-L-B, IPC-EF15XXX-XXX-XXX-PV-B, IPC-EF16XXX-XXX-XXX-L-B, IPC-EF16XXX-XXX-XXX-PV-B, IPC-EF18XXX-XXX-XXX-L-B, IPC-EF18XXX-XXX-XXX-PV-B

Test Result(s) and Test Method(s):Please refer to next page(s).

This report is issued according to the general clauses in www.ptc-testing.com by PTC. Responsibility, guarantee and law restriction are defined in the general service clauses. The report is only responsible for the submitted sample(s) except as otherwise noted. The report could not be copied without permission of the company.

Precise Testing & Certification (Guangdong) Co., Ltd. (PTC)

Building 1, No. 6, Tongxin Road, Dongcheng Street, Dongguan, Guangdong, China
Tel: 86-769-38808222 Fax: 86-769-38826111 [http:// www.ptc-testing.com](http://www.ptc-testing.com)



Test Report

Report No.: PTC25032012701C-EN01

Issue Date: Apr. 09, 2025

Page3 of 10

Test Result(s):

1.1) RoHS Directive 2011/65/EU -(Lead (Pb)/Cadmium(Cd)/Mercury(Hg)/Hexavalent Chromium(Cr⁶⁺)/PBBs/PBDEs)

Test Method: IEC 62321-3-1: 2013, IEC 62321-6:2015, analyzed by EDXRF & GC-MS.

No.	Materials Description	EDXRF Result(s) (mg/kg)					Chemical Result (mg/kg)	Conclusion
		Pb	Cd	Hg	Cr	Br		
1	White plastic (case)	BL	BL	BL	BL	BL	--	PASS
2	Silver metal with white coating (housing)	BL	BL	BL	BL	--	--	PASS
3	Black plastic (lid)	BL	BL	BL	BL	BL	--	PASS
4	Clear glass (display)	BL	BL	BL	BL	BL	--	PASS
5	Silver metal with black coating (PCB "FY-HYX303-2")	BL	BL	BL	BL	--	--	PASS
6	Black plastic (case, lens, PCB "FY-HYX303-2")	BL	BL	BL	BL	BL	--	PASS
7	Transparent plastic (case, lens, PCB "FY-HYX303-2")	BL	BL	BL	BL	BL	--	PASS
8	Silver metal with black coating (screws)	BL	BL	BL	BL	--	--	PASS
9	Silver metal (screws)	BL	BL	BL	BL	--	--	PASS
10	Silver metal (hex screw)	BL	BL	BL	BL	--	--	PASS
11	Black PCB(PCB "GSCSO-M-1")	BL	BL	BL	BL	IN	PBBs:N.D. PBDEs:N.D.	PASS
12	Dark white plastic (terminal, PCB "GSCSO-M-1")	BL	BL	BL	BL	BL	--	PASS
13	Silver metal (Pin, PCB "GSCSO-M-1")	BL	BL	BL	BL	--	--	PASS
14	Black PCB (PCB "EP13016LR")	BL	BL	BL	BL	IN	PBBs:N.D. PBDEs:N.D.	PASS
15	Silver metal with brown lettering(case, capacitor, PCB "EP13016LR")	BL	BL	BL	BL	--	--	PASS
16	Brown body (capacitor, PCB "EP13016LR")	BL	BL	BL	BL	BL	--	PASS

This report is issued according to the general clauses in www.ptc-testing.com by PTC. Responsibility, guarantee and law restriction are defined in the general service clauses. The report is only responsible for the submitted sample(s) except as otherwise noted. The report could not be copied without permission of the company.

Precise Testing & Certification (Guangdong) Co., Ltd. (PTC)

Building 1, No. 6, Tongxin Road, Dongcheng Street, Dongguan, Guangdong, China

Tel: 86-769-38808222

Fax: 86-769-38826111

[http:// www.ptc-testing.com](http://www.ptc-testing.com)



Test Report

Report No.: PTC25032012701C-EN01

Issue Date: Apr. 09, 2025

Page4 of 10

No.	Materials Description	EDXRF Result(s) (mg/kg)					Chemical Result (mg/kg)	Conclusion
		Pb	Cd	Hg	Cr	Br		
17	Black body (resistor, PCB "EP13016LR")	BL	BL	BL	BL	BL	--	PASS
18	White soft plastic (wire sheath)	BL	BL	BL	BL	BL	--	PASS
19	White plastic (round plug housing)	BL	BL	BL	BL	BL	--	PASS
20	Silver metal (pin, round plug)	BL	BL	BL	BL	--	--	PASS

- Note:**
1. mg/kg = milligram per kilogram (ppm).
 2. N.D. = Not Detected
 3. The result are obtained by EDXRF for primary screening, if the result exceeds the below limit (BL), and further chemical testing.
 4. For EDXRF screening, the result(s) of Cr VI was (were) reported as total chromium and the result(s) of PBBs and PBDEs was (were) reported as total bromine.

Screening limits in mg/kg for regulated elements in various matrices

Elements	Polymer	Metal	Composite Materials
Pb	$BL \leq (700-3\sigma) < X < (1300+3\sigma) \leq OL$	$BL \leq (700-3\sigma) < X < (1300+3\sigma) \leq OL$	$BL \leq (500-3\sigma) < X < (1500+3\sigma) \leq OL$
Cd	$BL \leq (70-3\sigma) < X < (130+3\sigma) \leq OL$	$BL \leq (70-3\sigma) < X < (130+3\sigma) \leq OL$	$LOD < X < (150+3\sigma) \leq OL$
Hg	$BL \leq (700-3\sigma) < X < (1300+3\sigma) \leq OL$	$BL \leq (700-3\sigma) < X < (1300+3\sigma) \leq OL$	$BL \leq (500-3\sigma) < X < (1500+3\sigma) \leq OL$
Cr	$BL \leq (700-3\sigma) < X$	$BL \leq (700-3\sigma) < X$	$BL \leq (500-3\sigma) < X$
Br	$BL \leq (300-3\sigma) < X$	--	$BL \leq (250-3\sigma) < X$

BL = Below Limit, OL = Over Limit, IN = Inconclusive, LOD = Limit of Detection

This report is issued according to the general clauses in www.ptc-testing.com by PTC. Responsibility, guarantee and law restriction are defined in the general service clauses. The report is only responsible for the submitted sample(s) except as otherwise noted.
The report could not be copied without permission of the company.

Precise Testing & Certification (Guangdong) Co., Ltd. (PTC)

Building 1, No. 6, Tongxin Road, Dongcheng Street, Dongguan, Guangdong, China
Tel: 86-769-38808222 Fax: 86-769-38826111 [http:// www.ptc-testing.com](http://www.ptc-testing.com)



Test Report

Report No.: PTC25032012701C-EN01

Issue Date: Apr. 09, 2025

Page5 of 10

Chemical Testing - Detection Limit & 2011/65/EU Limit:

Name of Chemicals	Method Detection Limit (mg/kg)	2011/65/EU Limit (mg/kg)
Lead (Pb)	5	1000
Cadmium (Cd)	5	100
Mercury (Hg)	5	1000
Chromium VI (Cr VI)	Non-metal: 5 Metal: Negative	Non-metal: 1000 Metal: Negative
Polybromobiphenyls (PBBs) -Bromobiphenyl (MonoBB) -Dibromobiphenyl (DiBB) -Tribromobiphenyl (TriBB) -Tetrabromobiphenyl (TetraBB) -Pentabromobiphenyl (PentaBB) -Hexabromobiphenyl (HexaBB) -Heptabromobiphenyl (HeptaBB) -Octabromobiphenyl (OctaBB) -Nonabromobiphenyl (NonaBB) -Decabromobiphenyl (DecaBB)	Each 5	Sum: 1 000
Polybromodiphenyl ethers (PBDEs) -Bromodiphenyl ether (MonoBDE) -Dibromodiphenyl ether (DiBDE) -Tribromodiphenyl ether (TriBDE) -Tetrabromodiphenyl ether (TetraBDE) -Pentabromodiphenyl ether (PentaBDE) -Hexabromodiphenyl ether (HexaBDE) -Heptabromodiphenyl ether (HeptaBDE) -Octabromodiphenyl ether (OctaBDE) -Nonabromodiphenyl ether (NonaBDE) -Decabromodiphenyl ether (DecaBDE)	Each 5	Sum: 1 000

This report is issued according to the general clauses in www.ptc-testing.com by PTC. Responsibility, guarantee and law restriction are defined in the general service clauses. The report is only responsible for the submitted sample(s) except as otherwise noted.
The report could not be copied without permission of the company.

Precise Testing & Certification (Guangdong) Co., Ltd. (PTC)

Building 1, No. 6, Tongxin Road, Dongcheng Street, Dongguan, Guangdong, China

Tel: 86-769-38808222

Fax: 86-769-38826111

[http:// www.ptc-testing.com](http://www.ptc-testing.com)



Test Report

Report No.: PTC25032012701C-EN01

Issue Date: Apr. 09, 2025

Page6 of 10

Test Result(s):

1.2) RoHS Directive 2011/65/EU and its subsequent amendments regulation EU No.2015/863 - (Phthalates DIBP,DBP, BBP, DEHP)

Method: IEC 62321-8: 2017, analyzed by Gas Chromatograph-Mass Spectrometry (GC-MS).

Substances	DBP	BBP	DEHP	DIBP	Conclusion
CAS No.	84-74-2	85-68-7	117-81-7	84-69-5	
Limit(s) (mg/kg)	1000	1000	1000	1000	
MDL (mg/kg)	50	50	50	50	
Material No.	Result (mg/kg)				
1+3+6	N.D.	N.D.	N.D.	N.D.	PASS
7+12+4	N.D.	N.D.	N.D.	N.D.	PASS
11+14+16	N.D.	N.D.	N.D.	N.D.	PASS
18+19+17	N.D.	N.D.	N.D.	N.D.	PASS

- Note:**
1. mg/kg = milligram per kilogram (ppm).
 2. N.D. = Not Detected (< MDL).
 3. MDL = Method Detection Limit.

Test Material List

The following materials apply only to the samples submitted for phthalates testing.

Material No.	Description (Location)
1	White plastic (case)
3	Black plastic (lid)
4	Clear glass (display)
6	Black plastic (case, lens, PCB "FY-HYX303-2")
7	Transparent plastic (case, lens, PCB "FY-HYX303-2")
11	Black PCB(PCB "GSCSO-M-1")
12	Dark white plastic (terminal, PCB "GSCSO-M-1")
14	Black PCB (PCB "EP13016LR")
16	Brown body (capacitor, PCB "EP13016LR")
17	Black body (resistor, PCB "EP13016LR")
18	White soft plastic (wire sheath)
19	White plastic (round plug housing)

This report is issued according to the general clauses in www.ptc-testing.com by PTC. Responsibility, guarantee and law restriction are defined in the general service clauses. The report is only responsible for the submitted sample(s) except as otherwise noted. The report could not be copied without permission of the company.

Precise Testing & Certification (Guangdong) Co., Ltd. (PTC)

Building 1, No. 6, Tongxin Road, Dongcheng Street, Dongguan, Guangdong, China
Tel: 86-769-38808222 Fax: 86-769-38826111 [http:// www.ptc-testing.com](http://www.ptc-testing.com)



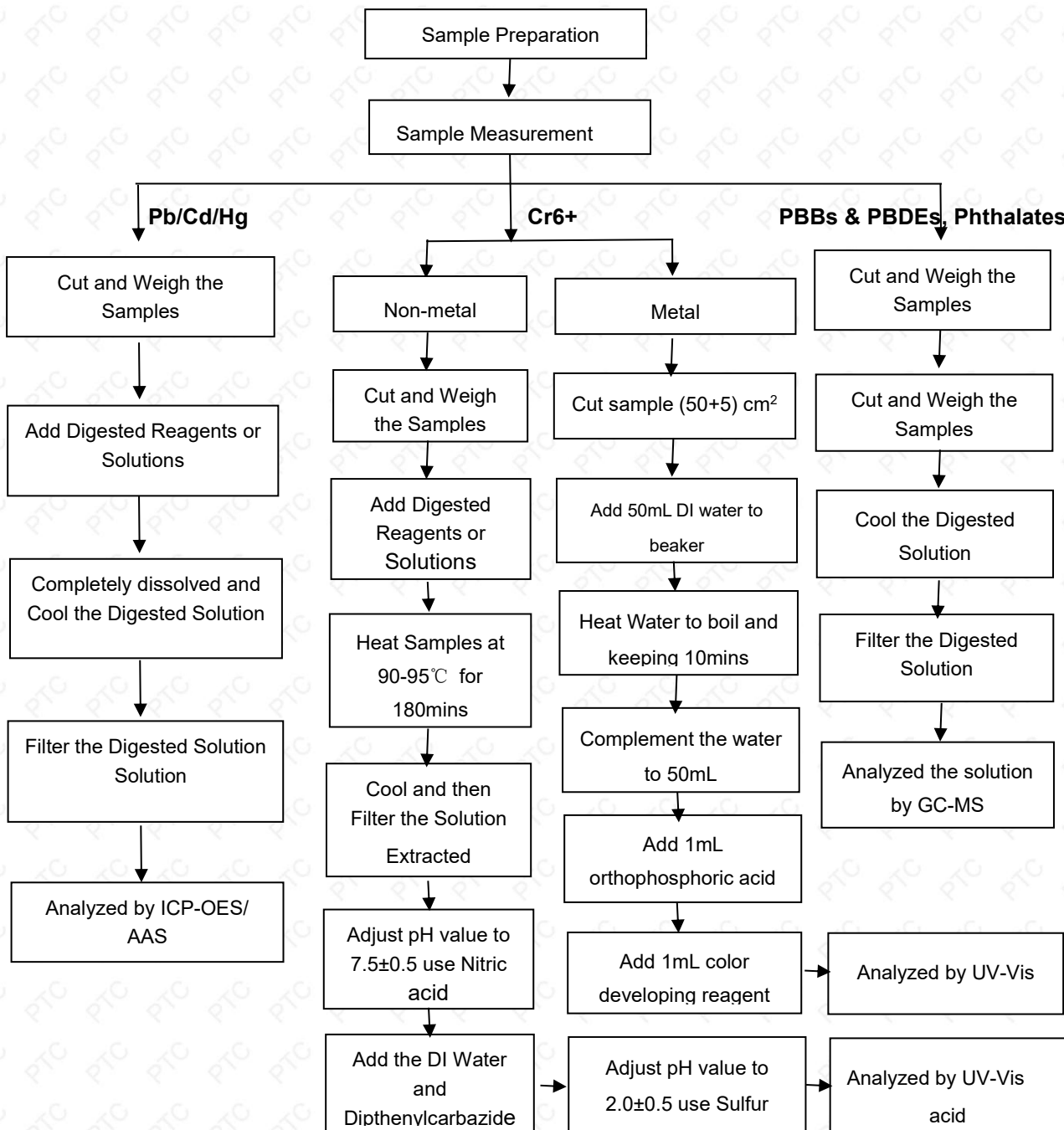
Test Report

Report No.: PTC25032012701C-EN01

Issue Date: Apr. 09, 2025

Page7 of 10

Pb/Cd/Hg/Cr6+/PBBs/PBDEs , Phthalates Testing Flow Chart



This report is issued according to the general clauses in www.ptc-testing.com by PTC. Responsibility, guarantee and law restriction are defined in the general service clauses. The report is only responsible for the submitted sample(s) except as otherwise noted. The report could not be copied without permission of the company.

Precise Testing & Certification (Guangdong) Co., Ltd. (PTC)

Building 1, No. 6, Tongxin Road, Dongcheng Street, Dongguan, Guangdong, China

Tel: 86-769-38808222

Fax: 86-769-38826111

[http:// www.ptc-testing.com](http://www.ptc-testing.com)



Test Report

Report No.: PTC25032012701C-EN01

Issue Date: Apr. 09, 2025

Page8 of 10

Photo(s) of Sample:



This report is issued according to the general clauses in www.ptc-testing.com by PTC. Responsibility, guarantee and law restriction are defined in the general service clauses. The report is only responsible for the submitted sample(s) except as otherwise noted. The report could not be copied without permission of the company.

Precise Testing & Certification (Guangdong) Co., Ltd. (PTC)

Building 1, No. 6, Tongxin Road, Dongcheng Street, Dongguan, Guangdong, China

Tel: 86-769-38808222

Fax: 86-769-38826111

[http:// www.ptc-testing.com](http://www.ptc-testing.com)

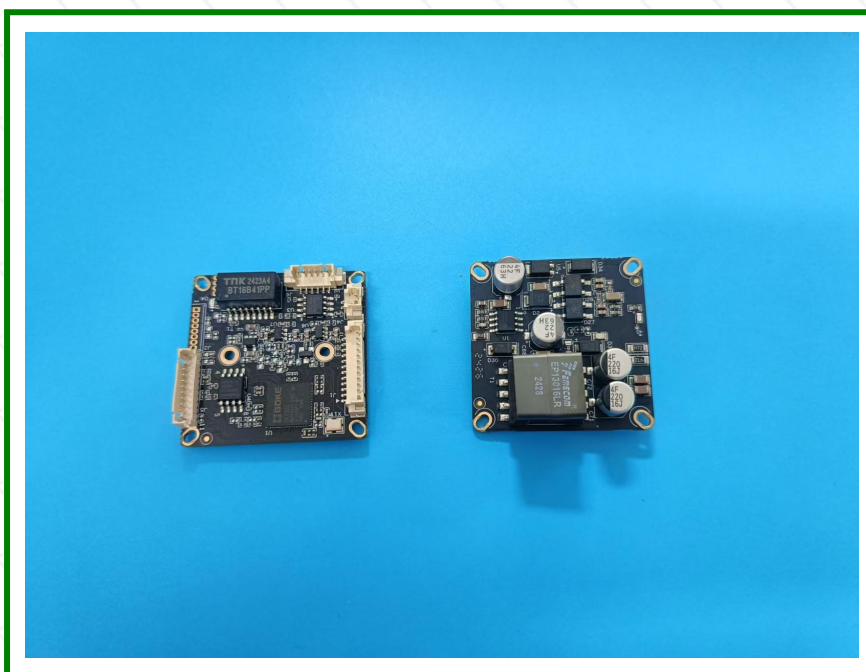
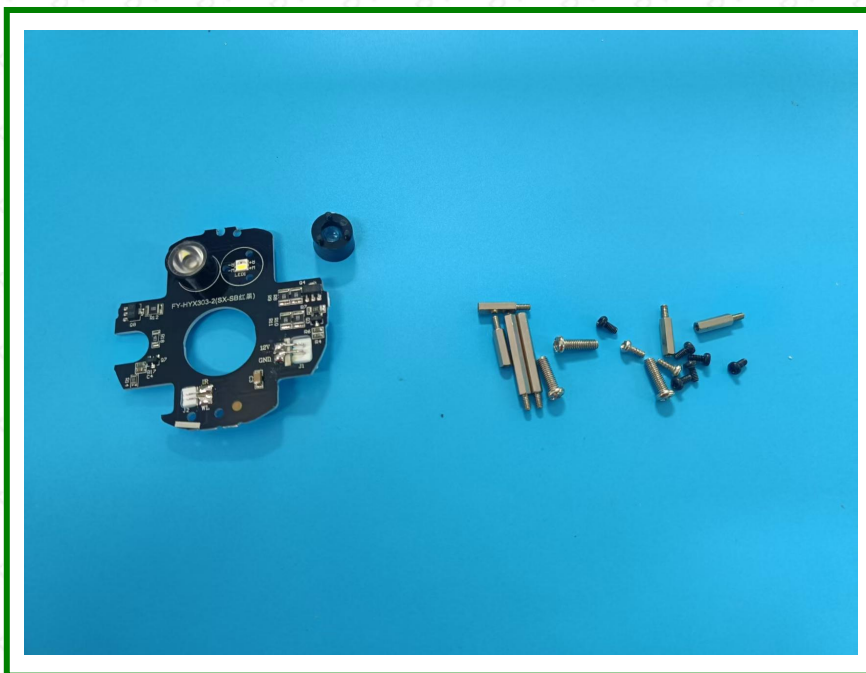


Test Report

Report No.: PTC25032012701C-EN01

Issue Date: Apr. 09, 2025

Page9 of 10



This report is issued according to the general clauses in www.ptc-testing.com by PTC. Responsibility, guarantee and law restriction are defined in the general service clauses. The report is only responsible for the submitted sample(s) except as otherwise noted. The report could not be copied without permission of the company.

Precise Testing & Certification (Guangdong) Co., Ltd. (PTC)

Building 1, No. 6, Tongxin Road, Dongcheng Street, Dongguan, Guangdong, China

Tel: 86-769-38808222

Fax: 86-769-38826111

[http:// www.ptc-testing.com](http://www.ptc-testing.com)



Test Report

Report No.: PTC25032012701C-EN01

Issue Date: Apr. 09, 2025

Page10 of 10



End of Report

This report is issued according to the general clauses in www.ptc-testing.com by PTC. Responsibility, guarantee and law restriction are defined in the general service clauses. The report is only responsible for the submitted sample(s) except as otherwise noted. The report could not be copied without permission of the company.

Precise Testing & Certification (Guangdong) Co., Ltd. (PTC)

Building 1, No. 6, Tongxin Road, Dongcheng Street, Dongguan, Guangdong, China

Tel: 86-769-38808222

Fax: 86-769-38826111

[http:// www.ptc-testing.com](http://www.ptc-testing.com)